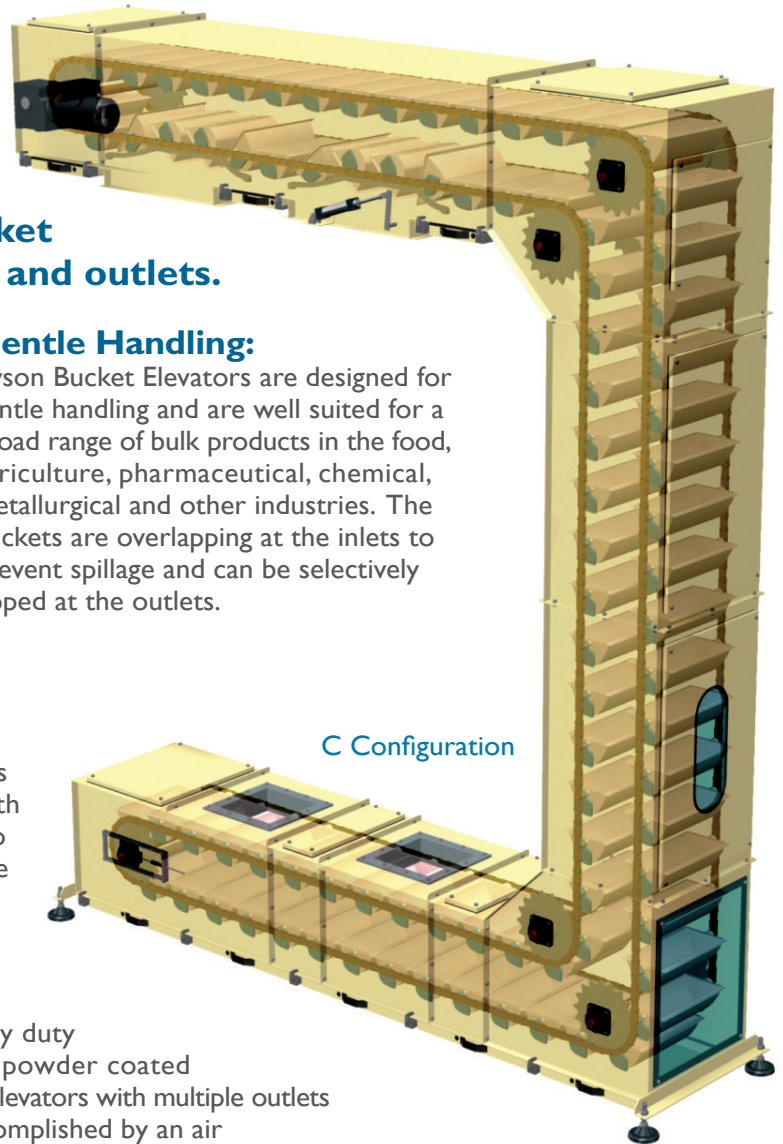


## Bucket Elevators

“Vertical Conveying of Bulk Materials”

**The Ryson Bucket Elevators combine vertical and horizontal transportation of bulk materials in one integral unit. They are of the totally enclosed pivoting bucket type and can have multiple inlets and outlets.**



### Gentle Handling:

Ryson Bucket Elevators are designed for gentle handling and are well suited for a broad range of bulk products in the food, agriculture, pharmaceutical, chemical, metallurgical and other industries. The buckets are overlapping at the inlets to prevent spillage and can be selectively tipped at the outlets.



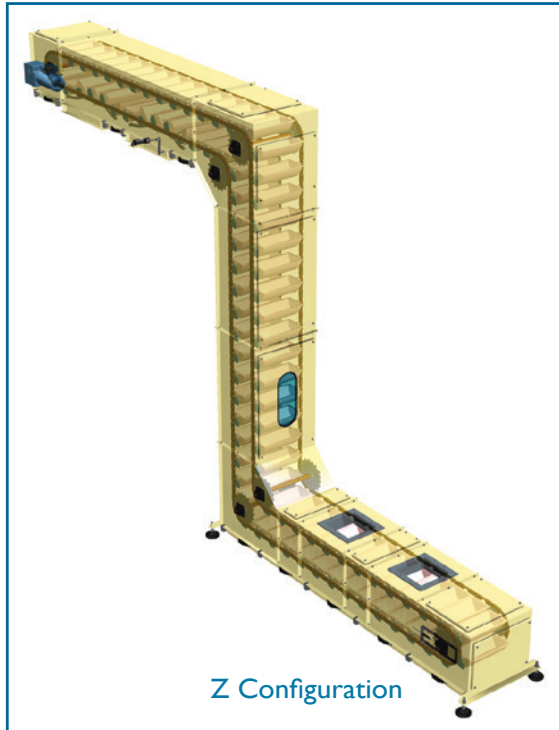
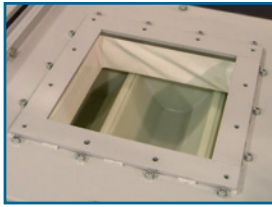
### Modular Design:

The Ryson modular design allows us to customize with ease and makes our bucket elevators easy to install and modify. The most common configurations are the C and Z configurations and are available with three different bucket sizes, yielding capacities up to 300, 700 or 1800 cubic feet per hour respectively. The buckets must be loaded with a controlled volume and across the full width of the buckets.

### Rugged Construction:

The Ryson Bucket Elevators are designed for heavy duty operations and long life. They can be delivered in powder coated carbon steel, stainless steel or washdown versions. Elevators with multiple outlets have selective bucket tipping capabilities. This is accomplished by an air actuated tipping ramp. The last tipping ramp is always in a fixed position to assure that all buckets are emptied. The chain is a 2" plated roller chain with hollow pin shaft and 1 1/8" diameter rollers. The rolling surface is made of polyurethane assuring smooth and quiet operation. The buckets are made of food grade reinforced polyamide, molded in one piece and can handle temperatures from -5 to +210 degrees Fahrenheit. Flanges are provided at the inlets and outlets to facilitate easy attachment of extended funnels, shoots or tubes.





Z Configuration

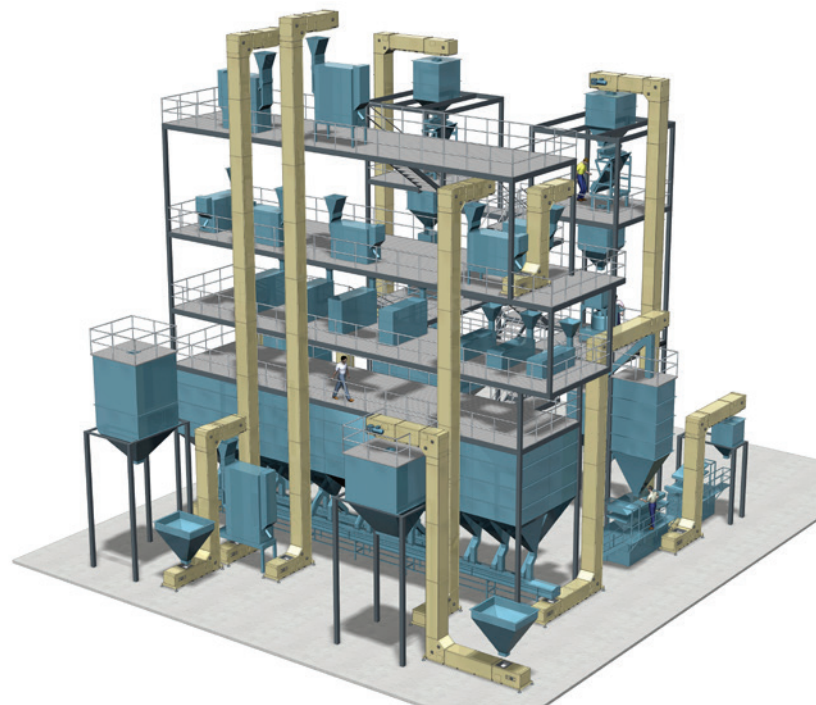


### Low Maintenance:

Only high quality components needing little maintenance are used throughout. All models have easy to remove inspection covers and a conveniently located inspection window. Drawers are provided underneath the horizontal sections to facilitate easy cleaning. The inside walls are smooth, thereby preventing dust buildup. All bearings are mounted outside for easy access. The buckets have a quick release mechanism to facilitate fast installation or removal of buckets. All Bucket Elevators are equipped with an automatic chain tensioning device and built-in overload protection. A VFD is required for proper operation. Consult our website for more information on integration and maintenance.

### Optional Features:

Several options are available including:  
controls • dust proof enclosures • additional inspection windows • anti-static, metal detectable or stainless steel buckets • cleaning station • stainless steel or washdown versions - For more information, visit [www.ryson.com](http://www.ryson.com).



# RYSON

INTERNATIONAL, INC

**VERTICAL CONVEYING SOLUTIONS**

For application assistance or more information, give us a call or visit [www.ryson.com](http://www.ryson.com)